



World Summit on Accessible Tourism

Destinations for All

Brussels 1-2 October 2018

Home-away-from-home

UD Living Lab, Hasselt, BE

Hubert Froyen

Anouk Tuinstra

Tourism... -away-from-home

Access to information, to transport, to accommodation, to food, to services & facilities, to activities...

A kind of 'Home', away-from-home

Need for essential facilities, also for :

- seniors
- people with a disability
- people from non English speaking backgrounds
- parents with children

Two cases, with focus on en-abling built environments :

- Public facilities : 'Room for Care & Wellbeing', for all
- Accommodation : Universal Design Living Lab

Design approaches from an historical perspective



Throughout the ages : **DESIGN for AVERAGE USERS**,
Exclusive, misfits lead to “**Adaptation de soi..**” (Grosbois, L-P.)



Post War : **Design for average users + Additional
categorical DESIGN for SPECIAL NEEDS.**



21st Century : **INCLUSIVE DESIGN or UNIVERSAL DESIGN, +...**
Inclusive, misfits call for “**Adaptation à soi..**” (Grosbois, L-P.)

Universal Design (UD)

The concept of *Universal Design* is about a new quality relationship between a diversity of users (old and young, strong and weak..) and human-made physical environments / objects.

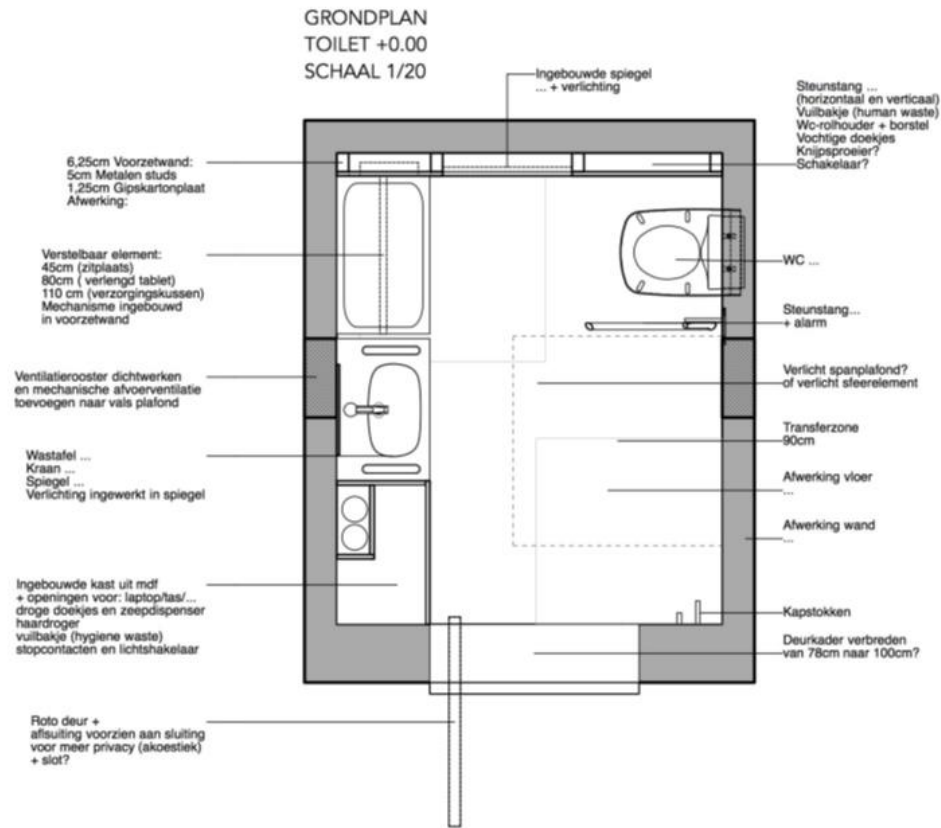
UD goes beyond the mere provision of special features for various segments of the population; instead it emphasizes a creative and inclusive approach to make the mainstream built environment more sustainable and better for everyone (*Better Gestalt* quality).

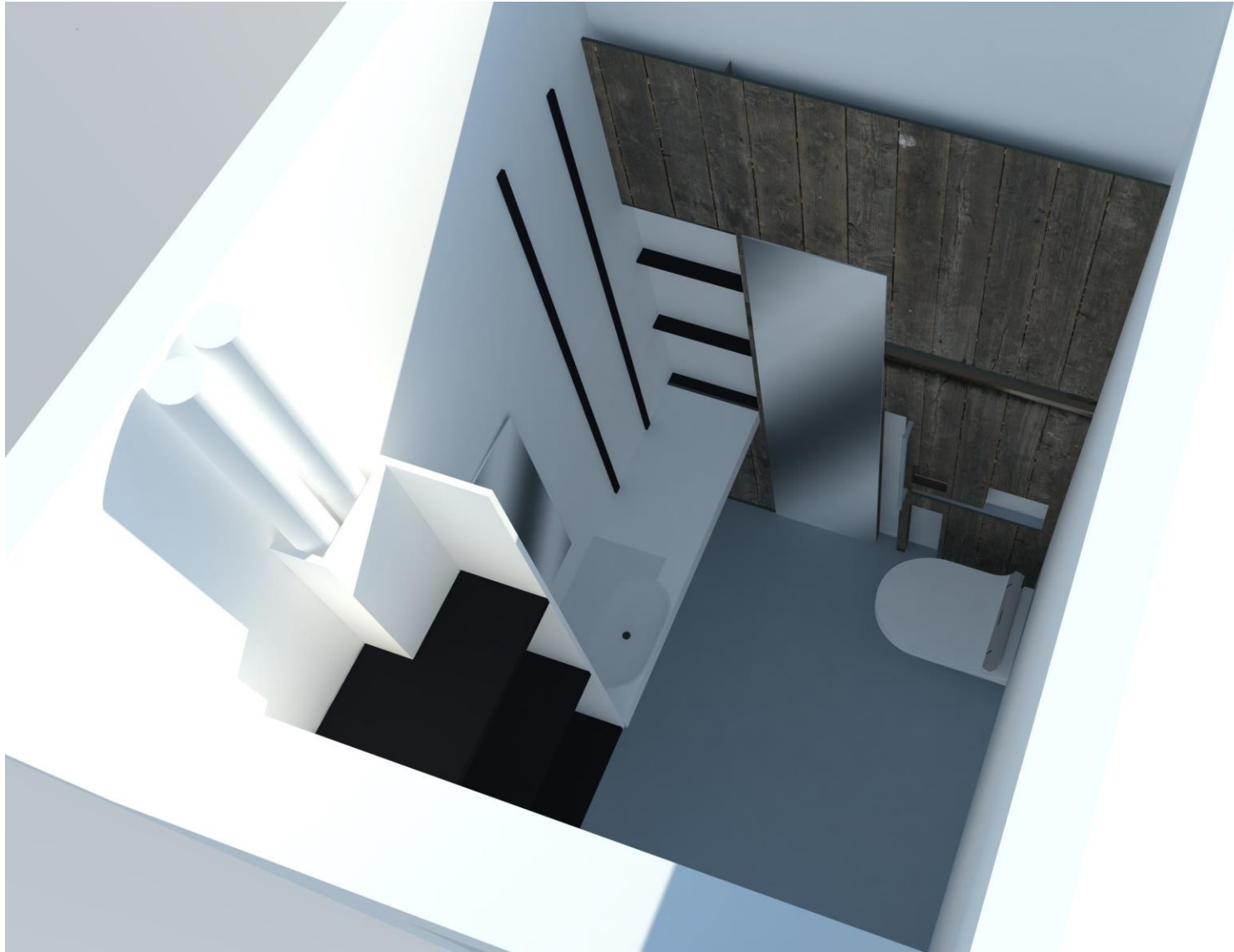
First Case : 'Room for Care & Wellbeing'



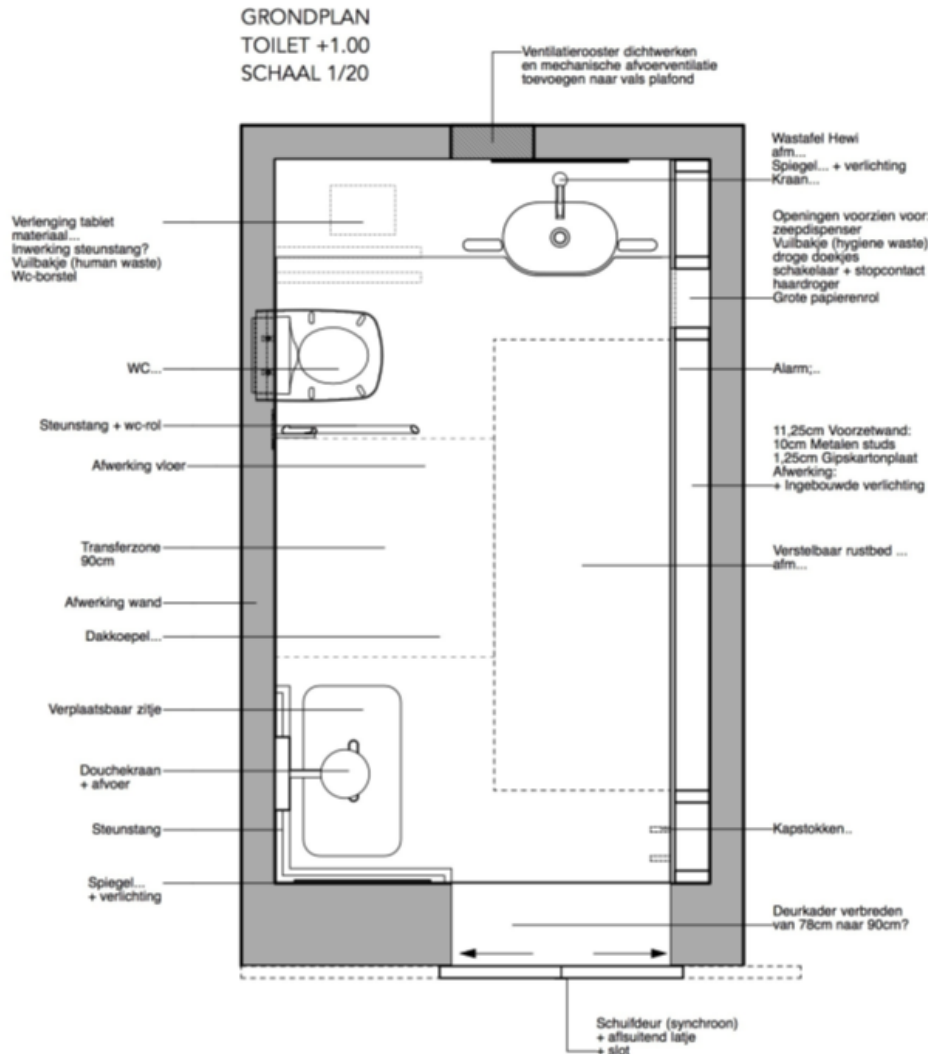
Existing situation 2016

Room A, for Care & Wellbeing for all





Room B, for Care & Wellbeing for all



Second Case :

Accommodation : Universal Design (UD)

Living Lab

2007 Concept, planning, fundraising

2013 Open as a research & demonstration setting for UD private housing

2018 Renovation and broadening of the scope, to UD tourist accommodation

UD Living Lab Hasselt, Belgium

Surfaces		Surf. m ²
Demonstration House		
	Renovation	196,34
	Extension	67,79
Total		264,43
Visitor Center		
	Renovation	101,86
	Extension	54,67
Total		156,53
General Total		420,65
Not included		
Basement		63,54



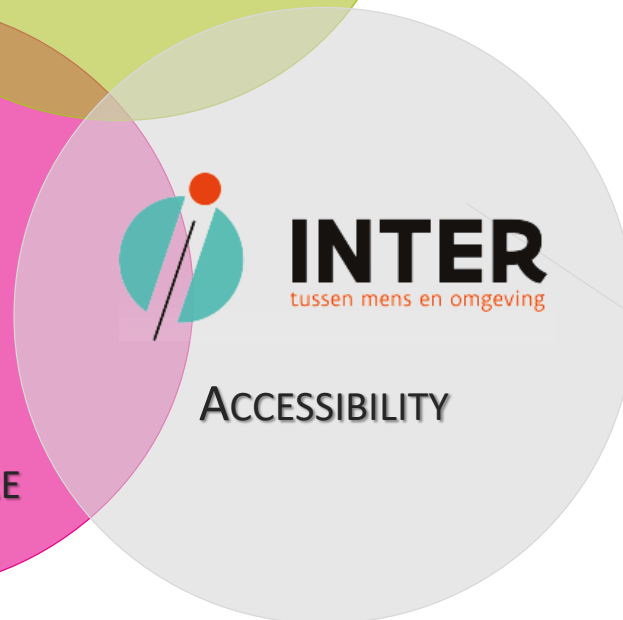
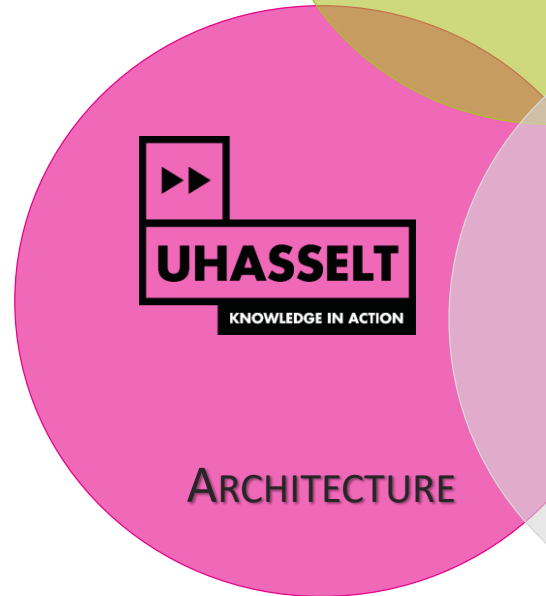
Unique partnership



PXL University College
Department of Healthcare,
Occupational Therapy,
Housing & Care

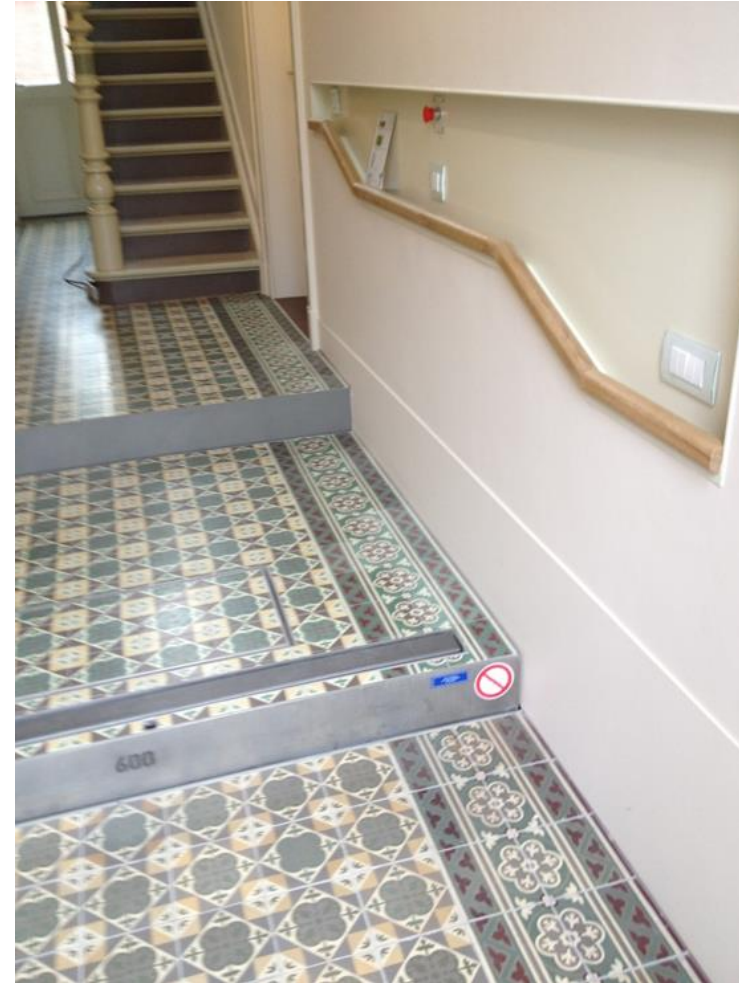


Hasselt University
Faculty of Architecture,
Universal Design



**Center of Expertise for
Accessibility and
Universal Design
Consultancy**

Entrance with platform lift



Kitchen

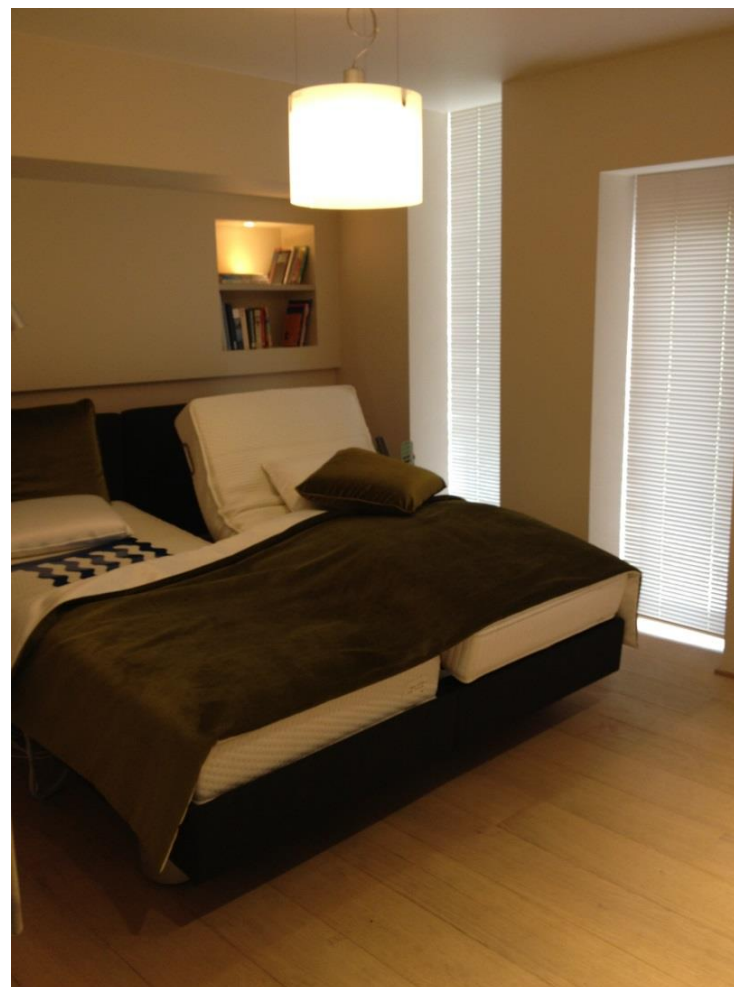
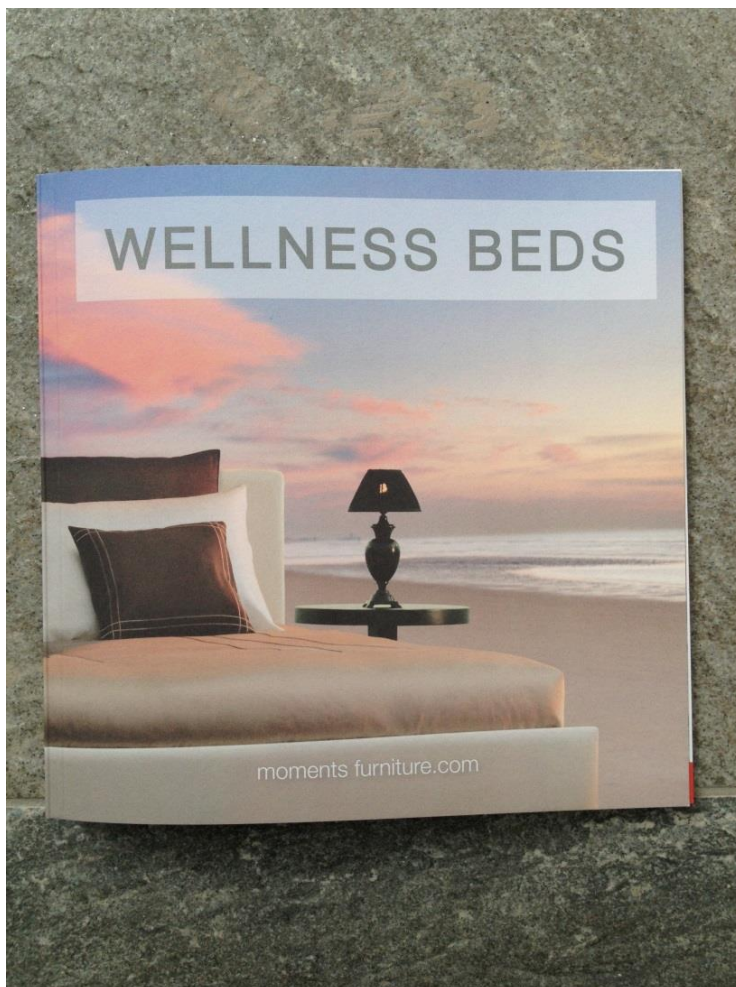
Continuous, adjustable worktop & cupboards







Wellness Bedroom

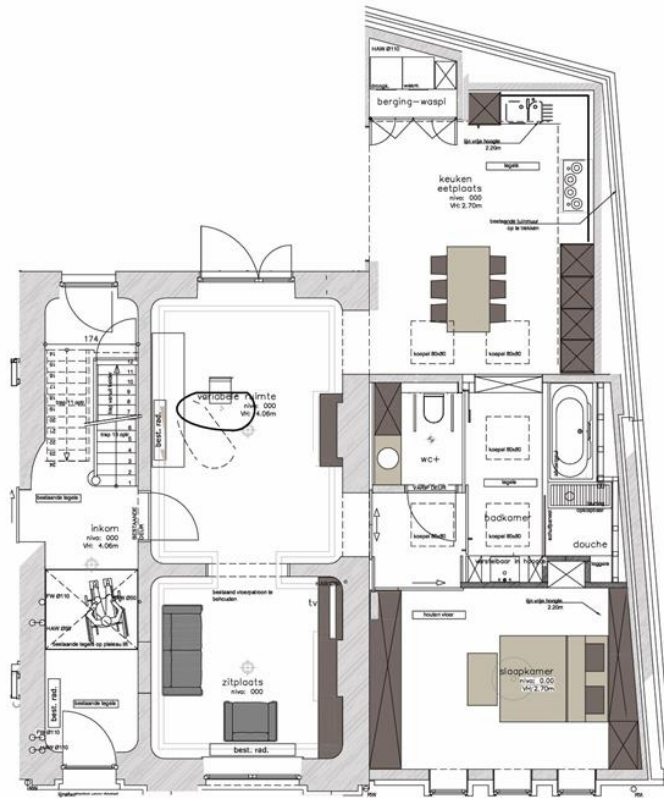


Domotics, Home Control

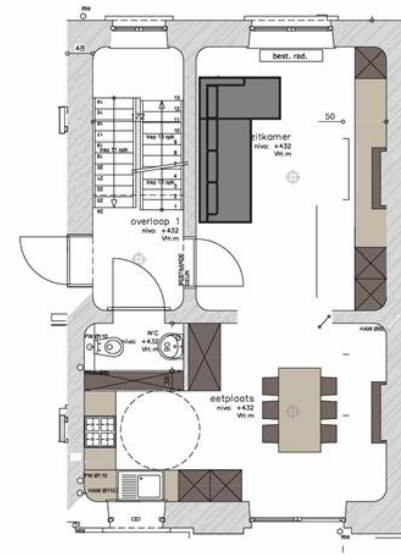




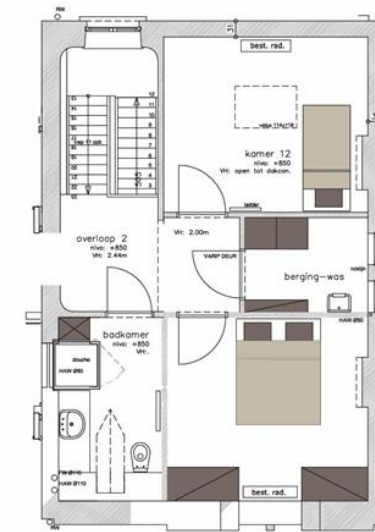
UD Living Lab Project Demonstration House



Gelijkvloers



1ste verdiep

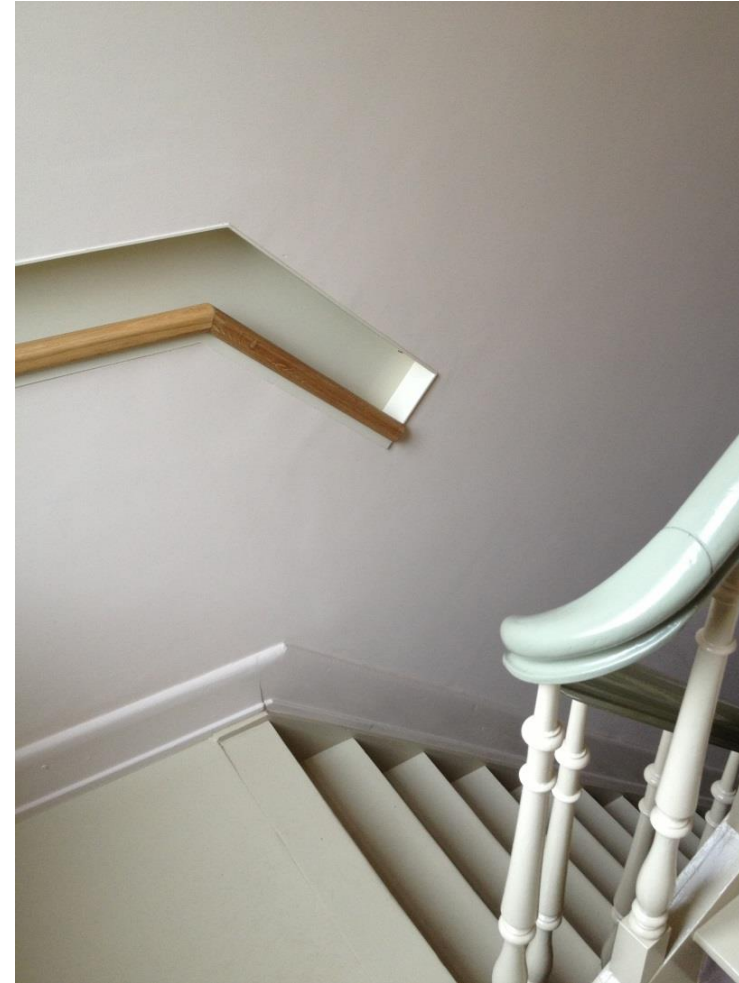


2de verdiep

Upper floor apartment



Tactile zone & handrail



Realizations 2013-2018







INTER
tussen mens en omgeving



UHASSELT

KNOWLEDGE IN ACTION


lsm
limburg sterk merk
Stichting openbaar nut





Partners of UD LivingLab, together with the Provincial Government of Limburg, support Accessible Accommodation & Tourism for All :

- Financial budget for adaptation of tourist accommodation (Bed & Breakfasts, hotels, motel accommodation, hostels, apartments, holiday homes, homestays, holiday parks, farmstays)
- UDLivingLab as infrastructure for experience (overnight stay), awareness raising, information, training, guidance.

Contact the UD Living Lab

 +(32) 11 77 56 82

 info@udwoonlabo.be

 Guffenslaan 39
3500 Hasselt

Belgium



 Anouk.Tuinstra@PXL.be

www.udwoonlabo.be